

# A200 Quick Start Guide

## Quick TV Mode Settings

For quick setup of the output video mode, please use the "TV Mode" key, followed by one of the numeric keys, as below:

- TV Mode + 0 = Auto TV mode
- TV Mode + 1 = Component/Composite NTSC 480i
- TV Mode + 2 = Component/Composite PAL 576i
- TV Mode + 3 = reserved
- TV Mode + 4 = Component 720p60
- TV Mode + 5 = Component 1080i60
- TV Mode + 6 = Component 1080p60
- TV Mode + 7 = HDMI 720p60
- TV Mode + 8 = HDMI 1080i60
- TV Mode + 9 = HDMI 1080p60
- TV Mode + CAPS/NUM = Toggles between 50Hz and 60Hz

## Interface

When the NMT first starts, the following navigation options are available:

### Media Source

This page is used to select which source you want to stream content from.

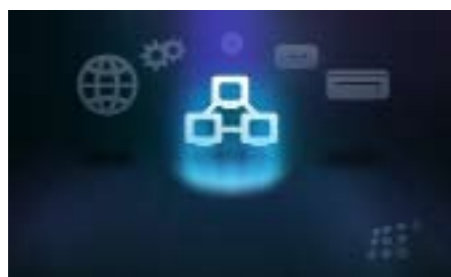


Figure 1.0 : Media Source screen

### Web Services

This page gives you access to Internet based services like the Media Service Portal (MSP), BitTorrent client status display and customizable URL's for your most frequently visited sites.



Figure 2.0 : Web Services screen

### Setup Page

This page allows you to configure various settings for your device:

- Home - Takes you back to the Media Source page, or to the last server you logged into.
- Preferences - General settings for the device like languages, subtitle languages, photo transition effects, locking the Setup pages, etc.

**Note:** To unlock the Setup pages, press Setup, follow by the Play key.

- Audio / Video - Digital/Analogue Video output settings as well as aspect ratio control and digital/analogue audio output settings.

- Network - Displays current IP information and allows configuration of network and timezone settings.

- Network Share - Configure your remote SMB and NFS shared folders here. You can choose to browse the available SMB shares on a Samba network. NFS shares will have to be entered manually.  
URL format for the network share paths:

SMB - `smb://<ip address>/dir`  
 NFS - `nfs://<ip address>/dir` (note the extra colon after IP address)  
 - `nfs-tcp://<ip address>/dir` (NFS using TCP protocol instead of UDP)

- NMT Applications\* - Configure the NMT media servers run state, SMB workgroup, device name and also the unified password which applies to both SMB and FTP access. Torrent settings allows the configuration of the BitTorrent client.
- DVD / Audio CD\*\* - Configure DVD and AudioCD playback settings.
- Maintenance - Displays the current device firmware version and options for firmware update and NMT morphing\*\*\*

- \* Only available with HDD and NMT apps installed
- \*\* Only if a DVD-ROM is attached (by USB or SATA)
- \*\*\* Refer to Page 3 for more details

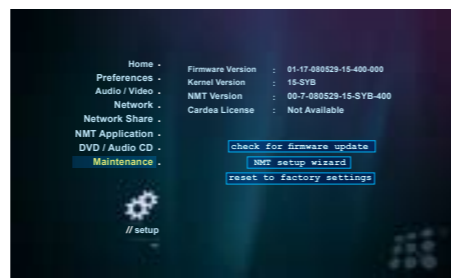


Figure 3.0 : Setup Maintenance screen

## Media Servers

This section of the guide provides more detail on the various media servers available.

### UPnP AV Server

The NMT will automatically detect all available UPnP AV compliant content servers on bootup and list them on the Media Source page. No additional setup is necessary on the NMT itself. Some servers may require additional authorization configuration on the server side, such as the WMP-NSS described next.

### Windows Media Player Network Sharing Service (WMP-NSS)

To enable WMP-NSS sharing to the NMT, the NMT must first be authorized. From the WMP-NSS application, select the following menu options:

Tools -> Options -> Library -> Configure Sharing

Click the checkbox next to the "Share my media to" menu item. You should now have a list of detected devices to choose from on the menu below. Selecting a listed device and Right Clicking on it will show you a list of options. Select Properties to view details about each device. Find the device that matches the MAC address of your NMT and select the "Allow" menu item.

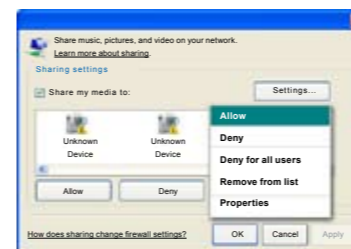


Figure 4.0 : Media Sharing screen

**Note:** The NMT's MAC address can be found from the NMT's Setup -> Network page. It will be listed under the "Ethernet Configuration" heading.

### Syabas CE-HTML Server

Syabas provides a proprietary server for use with the NMT. Simply install the server available for download at the following link:  
<http://www.networkedmediatank.com/download/myihome.html>

Once installed, the server should be automatically detected by the NMT and added to the Media Source page list.

### Third Party HTML-based Servers

Due to the NMT's support for HTML based media stream extensions, there are many open-source third party servers that are compatible with the Syabas-based NMT. Some popular examples are:

- SwissCenter (<http://www.swisscenter.co.uk>)
- Link (<http://lundman.net/wiki/index.php/Link>)
- WizD for NMT (<http://jhue.users.sonic.net/>)

### Third Party developed Applications

Our extensive user community has developed various applications that will enhance the functionality of the NMT. Please visit:

<http://www.networkedmediatank.com/userapps.php>

### Setting up the full NMT application suite

The NMT allows for the installation of an optional hard disk drive (HDD) that opens up a range of extra functionality.

If your NMT does not already come with a pre-installed HDD, you can install your own HDD and enable full NMT functionality by following the steps below:

- 1) Turn OFF the NMT.
- 2) Attach a HDD directly to the NMT SATA connector and connect the molex power supply
- 3) Power on the NMT and goto the Setup -> Maintenance page and select the "NMT setup wizard" option.  
You can download the application binary ([http://www.popcornhour.com/download/firmware\\_update.html](http://www.popcornhour.com/download/firmware_update.html)) onto a USB thumbdrive and use that as the installation source. If you do not have the files to install the NMT applications available, you can opt to install the apps directly from the internet. Please make sure you have a internet connection available and that the NMT is connected to it.

**Note:** This step will DELETE ALL the data on your HDD !

- 5) After reboot, most of the NMT applications will start up automatically. To manually adjust the settings for the NMT applications, go to the Setup page.

## Networked Media Tank (NMT) Functions

**Note:** The NMT's IP address can be found from the NMT's Setup -> Network page.

### myiHomeMS UPnP AV Server

A standard UPnP AV server for streaming media directly from the NMT's HDD. The server name will be displayed as '-hostname-> UPnP AV Server'. Usage Instructions:

- Under Setup -> Media Server, you can see the current status of the media server. A running server will be detectable and accessible by all UPnP AV compliant DMP.

**\* myiHomeLite CE-HTML Server**

Syabas's proprietary HTML-based media server for streaming content directly from the NMT's HDD. The server name will be displayed as '<hostname> myiHome'.

Usage Instructions:

- Under Setup -> Media Server, you can see the current status of the media server. A running server will be detectable and accessible by all DMP running Syabas middleware.

- You can also access this server from a PC by going to the following link from a web browser: <http://<NMT IP Address>:8088/>

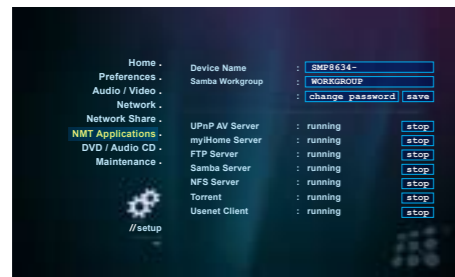


Figure 5.0 : NMT Applications Setup screen

**\* FTP Server**

Allows easy remote access and management of the NMT's HDD. The server is always running by default after installing the NMT applications.

Usage Instructions:

- The FTP server runs on the default port (21). So just point your FTP client to <NMT IP Address>  
**Username: nmt**  
**Password: 1234 (default)**

**Note:** FTP username is not configurable, but the password can be configured and is shared with the SMB server.

**\* NAS (SMB Server)**

This server allows a remote PC to access the locally installed HDD on the NMT as a SMB share.

Usage Instructions:

- 1) Click on Start -> Run.
- 2) Type "\\<NMT Hostname>" or "\\<NMT IP ADDRESS>" into the text box.
- 3) To allow for easier accesses to your NMT NAS in future, you can choose to map the SMB share as a drive under your "My Computer" folder of your PC. To do this:

- a) Type "\\<NMT Hostname>" or "\\<NMT IP ADDRESS>" into the text box. Alternatively you can go to "My Network Places", click on "View workgroup computers", browse and select your NMT device.
- b) Right click on the shared folder and select "Map Network Drive".

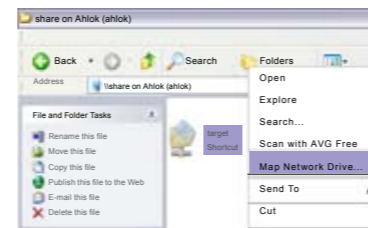


Figure 6.0 : Map Network Drive screen

- c) Select the drive you want your NMT shared folders to be represented.

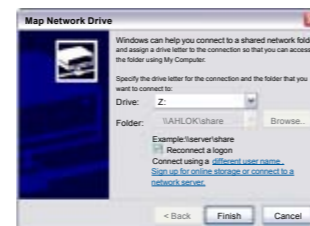


Figure 7.0 : Map Network Drive dialog screen

- d) The mapped drive should appear in "My Computer".

- SMB defaults:  
**Username: nmt**  
**Password : 1234**

**\* NAS (NFS Server)**

This server allows a remote PC to access the locally installed HDD on the NMT as a NFS share.

Usage Instructions:

The path to the NFS server on NMT is <NMT IP ADDRESS>/share

**Note:** NFS server access is not protected by password.

**\* BitTorrent downloader**

A BitTorrent client for direct download to the internal HDD.

Usage Instructions:

- Torrents can be managed by either clicking the Web Services -> Torrent links from the NMT, or using a web browser on your PC and going to the following URL : <http://<NMT IP ADDRESS>:8883/torrent/bt.cgi> or follow Torrent links from <http://<NMT IP ADDRESS>:8088>

- Alternatively, for Window XP, you can goto Start -> My Network Places -> Network Tasks. Select the 'Show Icons for networked UPnP devices' option. The NMT will show up with it's hostname. Double clicking on the icon will bring you to a page that will allow you to select the Torrent option.



Figure 8.0 : Torrent downloader page screen

**Note:** You can configure the Hostname from the Setup -> Preferences -> Hostname option on the NMT.

- You can upload torrent files and control the torrent download settings from this page.

- Torrent files are started automatically whenever the NMT browser encounters a .torrent file. You can also load .torrent file from USB storage devices.

- You can also configure some client settings from the Setup -> Torrent page on the NMT.

**\* Setting up the NZBGet on the NMT**

In the root of your hard disk you will find a folder called .nzbget. Inside this folder you will find two files: nzbget.conf and unpack.sh.

**Note:** Some FTP clients may hide this folder because it begins with a dot ".". On UNIX systems, files or folders that begin with a dot are hidden from normal directory listings. If you cannot see the folder, find an option on your client that will show hidden files or try to type in the folder name.

- You can open and edit nzbget.conf with a text editor.

**Note:** To edit the nzbget.conf file, use a UNIX-format capable text editor.

- In the text editor, fill in the information you got from your Usenet provider:

#Host-name of news server.  
**server1.host=news.yourserver.com** (Put the server name behind the '=').

#Port to connect to  
 (default should be set to '119' if not specified):

**server1.port=119**

#Username to use for authentication  
 (change 'USERNAME' to the name supplied by your Usenet provider):

**server1.username=USERNAME**

#Password to use for authentication  
 (change 'PASSWORD' to the password supplied by your Usenet provider):

**server1.password=PASSWORD**

#Maximum number of simultaneous connections to this server

**server1.connections=4**

- Once completed, save the file to the same place and restart the Usenet service in the NMT Applications menu (**Setup > NMT Applications**).

**\* Usenet: Working with NZBGet**

Working with NZBGet is simple and quick. Connect to the NZBGet web GUI from a browser via <http://ip.of.your.nmt:8066>.

**Note:** If the IP address of your NMT is '192.168.1.100', type <http://192.168.1.100:8066> in the address bar of your web browser.

To log in, use the following access username and password:

User ID : **nmt**  
 Password : **1234**

**\* Shutting down, Reboot and Powering down the unit**

The Power key will only turns off the display for the unit.

Power + Delete or hold down Power Key for 3s - Shutdown the unit, ready to power off, you will be able to get out of this state except a power cycle.

Power + Eject or Power + Enter - This will trigger a software reset of the unit.

For additional support, please visit the NMT Forum, <http://www.networkedmediatank.com> also browse the NMT Wiki page, <http://www.networkedmediatank.com/wiki>

Please register your Popcorn Hour product at <http://support.popcornhour.com> for direct support from Popcorn Hour support team.