

**Steps Installation**

For installation setup of the followed steps as below:

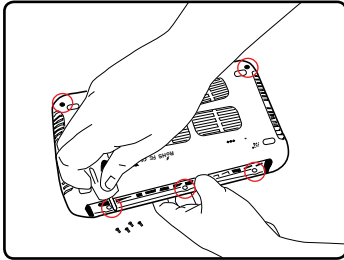


Figure 1.0 : Remove the screws at the back of the device

**Step 1**

Flip the A-200 over to show its underside. Remove the 2 screws located at the front of the device near the rubber pads, then remove the 3 screws located at the back of the device at the protruding ledge.

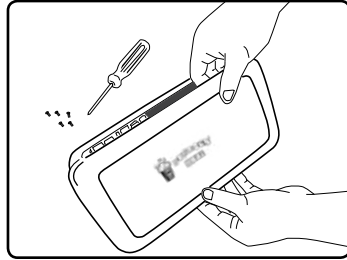


Figure 2.0 : Grasp the lid at the back of the device

**Step 2**

Turn the A-200 so that the top logo is facing you. Grasp the lid at the back of the device and gently lift it towards you. The lid will come free with a loud click. Set the lid aside.

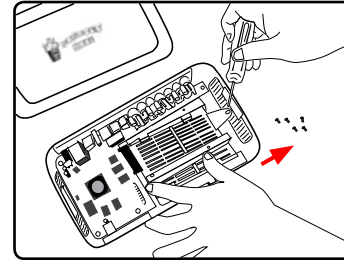


Figure 3.0 : Remove the screw and gently slide the tray

**Step 3**

Inside the A-200, remove the screw on the right of the plastic HDD tray. Gently slide the tray to the right to remove it.

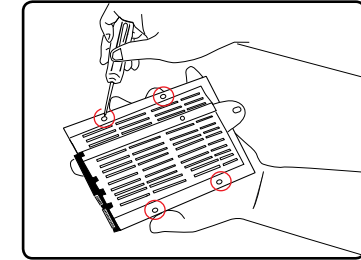


Figure 4.0 : Screw the HDD tray (3.5" drive)

**Step 4**

(3.5" drive) Place the HDD on top of the HDD tray and align it with the top left corner of the tray. Now flip the tray over along with the HDD. 4 of the holes at the back of the tray should align with the corresponding sockets on the bottom of the HDD. Screw in all 4 sockets.

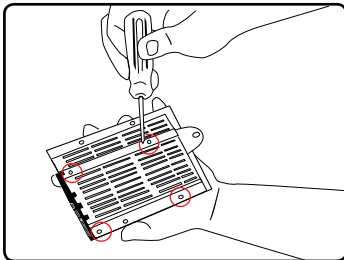


Figure 5.0 : Screw the HDD tray (2.5" drive)

**Step 5**

(2.5" drive) Place the HDD on top of the HDD tray and align it with the top left corner of the tray. Now flip the tray over along with the HDD. 4 of the holes at the back of the tray should align with the corresponding sockets on the bottom of the HDD. Screw in all 4 sockets.

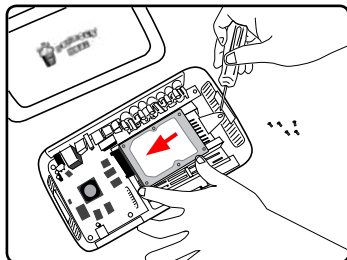


Figure 6.0 : Insert the HDD plate inside the A-200

**Step 6**

Once the HDD has been securely fastened to the tray, place the tray back in the A-200 and gently slide it to the left to lock it back in place. Make sure that the tray has been securely latched to the base and that the HDD connector has mated fully with the A-200 circuit board. Replace the screw on the right end of the tray.

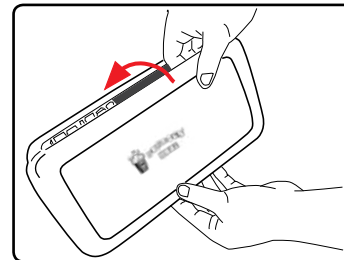


Figure 7.0 : Replace the top lid of the A-200

**Step 7**

Replace the top lid of the A-200 by lifting the lid at an angle and aligning the front of the lid with the device. Gently lower the back of the lid into place and it should click into position. Flip the A-200 over and replace all 5 screws.

**Note:**

- 1) Disconnect all cables from the A-200 before proceeding.
- 2) The hard disk drive (HDD) is not provided.

176 mm (H)

260 mm (W)